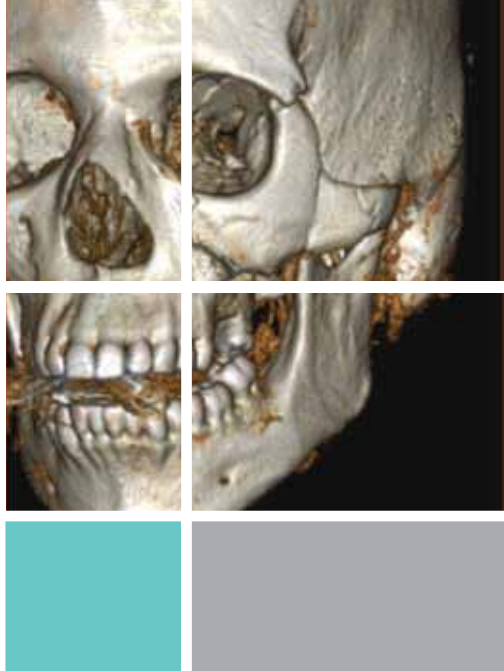


A DVD TEACHING ACTIVITY

# 2013 Radiology After Five:

How to Make Night and  
Weekend Call a Success!



Designated as Self Assessment CME (SA-CME)  
by the American Board of Radiology (ABR)

20.0 *AMA PRA Category 1 Credit(s)*<sup>TM</sup>

**CT • 14.75 Hours**

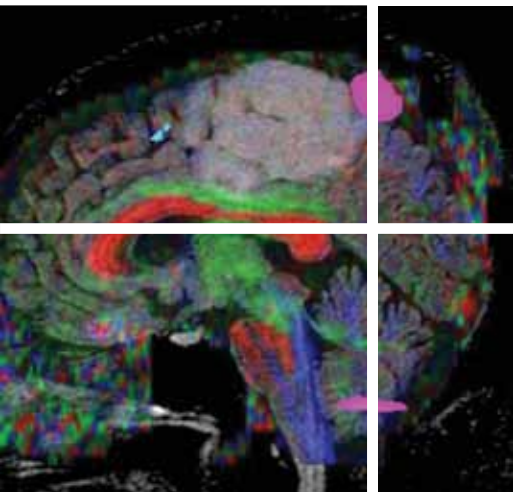
**MR • 4.5 Hours**

**US • 2.75 Hours**

**ESI** Educational  
Symposia

Superior Image Quality  
FREE SYLLABUS with purchase of entire set

Release Date: September 15, 2013



**FREE!**  
**SHIPPING**  
(ground shipping within the US)

## About This Activity

This DVD activity is structured to provide important and clinically relevant information for those physicians and other medical personnel who provide or use radiology services in emergency suites, intensive care units, trauma centers, and other emergency and critical care locations. Imaging protocols, techniques and diagnostic pitfalls are emphasized so that studies can be performed and interpreted in an optimal and time efficient manner so that patients may benefit fully from these procedures. The carefully selected internationally recognized faculty stress the importance of minimizing radiation dose to protect the patient's welfare. The need for careful and complete communication between the radiologist and the clinicians will be emphasized.

## Target Audience

This DVD CME activity is primarily intended and designed to educate those physicians and other medical personnel who use, supervise and/or interpret radiology studies and procedures in emergency suites, trauma centers and intensive care units. Thus, this should be particularly helpful for radiologists, intensivists, trauma surgeons, allied health personnel and emergency medicine physicians. It should also be beneficial for those who order imaging studies and wish to better understand current applications of imaging methods and indications.

## Scientific Sponsor

Educational Symposia

## Accreditation

**Physicians:** Educational Symposia is accredited by the Accreditation Council for Continuing Medical Education (ACCME) to provide continuing medical education for physicians.

Educational Symposia designates this enduring material for a maximum of 20.0 *AMA PRA Category 1 Credit(s)*<sup>™</sup>. Physicians should claim only the credit commensurate with the extent of their participation in the activity.

Credits awarded for this enduring activity are designated "SA-CME" by the American Board of Radiology (ABR) and qualify toward fulfilling requirements for Maintenance of Certification (MOC) Part II: Lifelong Learning and Self-assessment.

**Technologists:** No Category A CE credit is available for this activity.

All DVD course participants are required to pass a written or online test with a minimum score of 70% in order to be awarded credit. (Exam materials, if ordered, will be sent with your DVD order.) All DVD course participants will also have the opportunity to critically evaluate the program as it relates to practice relevance and educational objectives.

***AMA PRA Category 1 Credit(s)*<sup>™</sup> for these programs may be claimed until September 14, 2016.**

This DVD activity was planned and produced by Educational Symposia, the leader in diagnostic imaging education since 1975.

This DVD activity was planned and produced in accordance with the ACCME Essential Areas and Elements.

## Educational Objectives

At the completion of this DVD CME activity, subscribers should be able to:

- Discuss approaches to imaging of the most frequent and serious emergency and critical care problems that occur in their practice.
- Understand how best to respond to the wide variety of imaging and interventional situations that occur most often during the evening and weekends.
- Implement into their practices protocols for assessing the trauma patient in a time efficient manner.

*No special educational preparation is required for this CME activity.*

# Faculty

---

## Eric N. Faerber, M.D., FACR

*Director, Department of Radiology  
Chief, Section of Neuroradiology  
St. Christopher's Hospital for Children  
Professor of Radiology and Pediatrics  
Drexel University College of Medicine  
Philadelphia, PA*

## Michael P. Federle, M.D.

*Professor and Associate Chair for Education  
Department of Radiology  
Stanford University Medical Center  
Stanford, CA*

## Alisa D. Gean, M.D.

*Professor of Radiology, Neurology and  
Neurological Surgery  
University of California, San Francisco  
Brain and Spinal Injury Center (BASIC)  
San Francisco General Hospital*

## Lawrence R. Goodman, M.D., FACR

*Professor, Diagnostic Radiology,  
Pulmonary Medicine & Critical Care  
Chief of Thoracic Imaging  
Medical College of Wisconsin*

## Stuart E. Mirvis, M.D., FACR

*Professor of Diagnostic Radiology  
Director of Trauma/Emergency Radiology  
University of Maryland School of Medicine*

## Lawrence R. Muroff, M.D., FACR

*CEO & President  
Imaging Consultants, Inc.  
Tampa, FL  
Clinical Professor of Radiology  
University of Florida and University of South Florida  
Colleges of Medicine*

## Liina Poder, M.D.

*Associate Professor of Clinical Radiology  
Department of Radiology and Biomedical Imaging  
UCSF School of Medicine  
San Francisco, CA*

## William R. Reinus, M.D., MBA, FACR

*Professor and Vice Chairman Radiology  
Director of Musculoskeletal and Trauma Radiology  
Temple University Medical School  
Philadelphia, PA*

## Howard A. Rowley, M.D.

*Professor of Radiology, Neurology and Neurosurgery  
Joseph Sackett Professor of Radiology  
Chief of Neuro MRI  
University of Wisconsin  
Madison, WI*

## Robert M. Steiner, M.D., FACR, FACC

*Professor of Radiology  
Temple University School of Medicine  
Chief Thoracic Radiology  
Philadelphia, PA*

## Charles S. White, M.D.

*Professor and Vice Chair, Clinical Affairs  
Chief of Thoracic Radiology  
Department of Diagnostic Radiology and  
Nuclear Medicine  
University of Maryland School of Medicine  
Baltimore, Maryland*

---

DVD teaching programs feature a distinctive production process termed “Digital Studio Enhancement” including:

- Post processed diagnostic images
- Clearly visible pathology and anatomy
- Improved graphic and text legibility
- Electronic pointer correlation with speaker's indications

This production process is exclusive to Educational Symposia DVD programs.

If you receive more than one brochure,  
please pass the extra along to a colleague.

## Program 1

Abdominal Imaging in Patients with Suspected Acute Appendicitis: The Differential Diagnosis of RLQ Disease

*Michael P. Federle, M.D.*

Productivity Measurement and Management: Stepping on the Third Rail of Radiology

*Lawrence R. Muroff, M.D., FACR*

The Role of US in Abdominal and Pelvic Pain: The Non-Gynecologic Patient

*Liina Poder, M.D.*

## Program 2

Pediatric Pelvic and Abdominal Emergencies

*Eric N. Faerber, M.D., FACR*

Non-Traumatic Aortic Imaging

*Charles S. White, M.D.*

The Role of US in Abdominal and Pelvic Pain: The Gynecologic Patient

*Liina Poder, M.D.*

Illustrative Case Presentations

*Liina Poder, M.D.*

*Michael P. Federle, M.D.*

## Program 3

Blunt and Penetrating Trauma of the Abdomen: Bowel and Mesenteric Injuries

*Michael P. Federle, M.D.*

Acute Findings in Abdominal Transplants: Pancreas, Liver and Kidneys

*Liina Poder, M.D.*

## Program 3 (continued)

An Imaging Approach to Thoracic Trauma

*Robert M. Steiner, M.D., FACR, FACC*

## Program 4

Injuries to the Solid Organs of the Abdomen: Liver, Spleen and Pancreas

*Stuart E. Mirvis, M.D., FACR*

Critical Care Radiology in the Emergency Department and ICU Patient

*Robert M. Steiner, M.D., FACR, FACC*

Acute Injuries of the Hip and Pelvis

*William R. Reinus, M.D., MBA, FACR*

## Program 5

Changing Imaging Patterns in the Patient with Pneumonia

*Lawrence R. Goodman, M.D., FACR*

Call Coverage Options: Trends That Impact the Way We Deal With Call

*Lawrence R. Muroff, M.D., FACR*

Investigating Vascular Injuries of the Thorax

*Stuart E. Mirvis, M.D., FACR*

## Program 6

Illustrative Chest Disease Cases in the Emergency Patient

*Lawrence R. Goodman, M.D., FACR*

CNS Emergencies in the Infant and Child

*Eric N. Faerber, M.D., FACR*

# NEW!!

Purchase and Submit Your

CME Application | Critique | Test Package Online.

## Program 6 (continued)

### Emergency Stroke CT

*Howard A. Rowley, M.D.*

### Interactive Cases

*Stuart E. Mirvis, M.D., FACR*

*Michael P. Federle, M.D.*

*Liina Poder, M.D.*

## Program 7

### Abdominal Hemorrhage: Update on Diagnosis and Management

*Michael P. Federle, M.D.*

### Imaging the Airway and Chest in the Infant and Child

*Eric N. Faerber, M.D., FACR*

### Business of Quality: Incentives for Quality in American Medical Care

*William R. Reinus, M.D., MBA, FACR*

## Program 8

### Acute Respiratory Distress: Asthma, COPD and IPF Exacerbation

*Robert M. Steiner, M.D., FACR, FACC*

### Diffusion: How to be Right When It's Bright

*Howard A. Rowley, M.D.*

### Acute Injuries of the Cervical Spine - Part 1

*William R. Reinus, M.D., MBA, FACR*

### Illustrative Cases

*Eric N. Faerber, M.D., FACR*

*Howard A. Rowley, M.D.*

*William R. Reinus, M.D., MBA, FACR*

## Program 9

### Acute Injuries of the Cervical Spine - Part 2

*William R. Reinus, M.D., MBA, FACR*

### Evaluation of CNS Hemorrhage

*Howard A. Rowley, M.D.*

### Imaging Maxillofacial Fracture: Focus on the Orbit

*Stuart E. Mirvis, M.D., FACR*

## Program 10

### The Diagnosis of Pulmonary Embolism in the Emergency Room

*Lawrence R. Goodman, M.D., FACR*

### Emergency CNS Case Differentials: Thinking, Fast and Slow

*Howard A. Rowley, M.D.*

### Imaging Traumatic Brain Injury: Past, Present and Future

*Alisa D. Gean, M.D.*

Faculty & topics subject to change.

Visit [www.edusymp.com](http://www.edusymp.com)  
and see ESI events and information.

Video

DVD Teaching Activity

Order Form:

2013 Radiology After Five: How to Make Night and Weekend Call a Success!

FREE SYLLABUS with purchase of entire set

20.0 AMA PRA Category 1 Credit(s)™ Available until September 14, 2016

Price includes standard ground shipping & handling charges within the continental United States. Payment must be in U.S. dollars.

Please send the following checked items:

ENTIRE SET \$1095

- PROGRAM 1-10 \$225 each

RAFV13

CME APPLICATION(S) NOT INCLUDED IN PURCHASE PRICE

Additional Syllabus at \$65.00 each

For orders sent to a Florida address, please add 7% sales tax

Number of DVD CME Packs with Mail Order test requested at \$295 each

Number of DVD CME Packs with Online test requested (EMAIL ADDRESS REQUIRED) at \$295 each

Optional Domestic Shipping Methods: Overnight\* (\$75) 2nd Day\* (\$45) 3rd Day\* (\$30) (Delivery times are business days only)

For orders shipped to Canada add \$75 for shipping (Please allow 3 - 5 business days for delivery)

For international orders (excluding Canada or Mexico), add \$175 for shipping (Please allow 3 - 6 business days for delivery) (Customer is solely responsible for the cost of duties, customs, tariffs, import fees and/or other costs associated with your order)

Number of CME Mail Order applications requested (1 CME application required per person) at \$95 each

Number of CME Online applications requested (1 CME application required per person) (EMAIL ADDRESS REQUIRED) at \$95 each

TOTAL

Name M.D. D.O. Ph.D. Other

Company Specialty

Address No P.O. Boxes. We cannot be responsible for non-delivery when we receive an incorrect address. City / State / Zip / Country

Phone Email - For Shipment Notification / Online Test

Card Number Exp. Date Security Code

Billing Address City / State / Zip / Country

Cardholder Signature

4 Easy Ways To Order

We Accept



INTERNET www.edusymp.com

MAIL

Check payable to: Educational Symposia 5620 West Sligh Avenue Tampa, Florida 33634-4490

FAX

(800) 344-0668 (U.S. & Canada) (813) 806-1001

PHONE

(800) 338-5901 (U.S. & Canada) (813) 806-1000

Reduce your mail clutter or just add email announcements. Please visit the "Mailing List" section of our website at www.edusymp.com.

## DVD CME Packs

Educational Symposia is constantly exploring ways to better serve our customers. Subscribers of our DVD CME teaching activities asked for a simpler way to share a DVD Teaching Activity. We listened and are pleased to offer the **DVD CME Pack**.



Here's how it works. Once the initial order for an entire set is placed, order as many **DVD CME Packs** as needed at a significantly reduced price. It really is that simple!

Educational Symposia's innovative **DVD CME Packs** allow each participating physician to own his/her set of DVDs. A personal set provides the opportunity to view at one's own convenience and adds to a personal reference library. **DVD CME Packs** are priced to make it a practical alternative to "waiting in line" to receive the next DVD.

Each **DVD CME Pack** contains:

- An entire set of DVDs in a convenient case designed for durability and ease of access
- One CME application and test
- A one or two volume syllabus (depending on the series). Syllabus is included in the purchase price but is not enclosed in the DVD CME case.

See order form to order a **DVD CME Pack** for this series. To order a **DVD CME Pack** for a previously purchased DVD teaching activity, visit us online at [www.edusymp.com](http://www.edusymp.com), or call toll free at (800) 338-5901.

## Multiple CME Subscribers.....

Educational Symposia DVD Teaching Activities are accredited for *AMA PRA Category 1 Credit(s)*<sup>TM</sup> for three years from the original release date. Once the initial order for an entire set is placed, the number of CME applications and/or **DVD CME Packs** that can be ordered is limitless. Simply call (800) 338-5901 or access our website at [www.edusymp.com](http://www.edusymp.com) and reference the name of the person or facility of the originating order. See order form for pricing.

## Cancellation Policy

If you are not satisfied with your purchase, you may return your purchase (or any portion of your purchase) within 15 days of receiving it. You will receive a refund for the portion that is returned, less a \$125.00 processing fee. If you are returning/cancelling multiple DVD series, please note the \$125.00 processing fee applies to each series. If your purchase was sent express, the additional shipping charges will NOT be refunded. No refunds can be made after 15 days. All cancellations must be in writing. CME credit cannot be granted on the portion of the purchase that is returned. Abuse of this cancellation policy (2 or more returns) renders the cancellation policy void. There are no refunds for DVD CME Packs.

*Symposia At Sea*<sup>TM</sup>  
PRESENTED BY EDUCATIONAL SYMPOSIA

**4 SPECTACULAR CRUISES**  
FEATURING 5 MEETINGS



**ATTEND BOTH & SAVE!**

**Head & Neck  
Imaging: What You  
Need to Know**

**Neuroradiology in  
Clinical Practice**

Cruise on the Holland  
America's Noordam  
July 1 - 12, 2014



**A Practical Approach  
to Ultrasound in  
Obstetrics &  
Gynecology**

Cruise on the Celebrity  
Equinox  
July 5 - 12, 2014



**Updates in  
Oncology Imaging,  
Therapies & Treatment**

Cruise on the Royal  
Princess  
July 20 - 31, 2014



**Updates in  
Cardiovascular &  
Peripheral Imaging**

Cruise on the Crown  
Princess  
August 2 - 9, 2014

For more information or to register for any of these meetings,  
visit [www.edusymp.com](http://www.edusymp.com) or call (800) 237-7230.